

PINE Controller Firmware Updater

This guide shows you how to update the firmware of your PINE controller.

Last updated: 04/10/18



Download:

Both the app and the firmware for the controller can be downloaded from the following address:

<http://blackforestmotion.com/downloads/>

Please note: At the time of publication of this manual, the app is only available for Android and the firmware updater only for Windows. iOS and OSX will be added in the future.

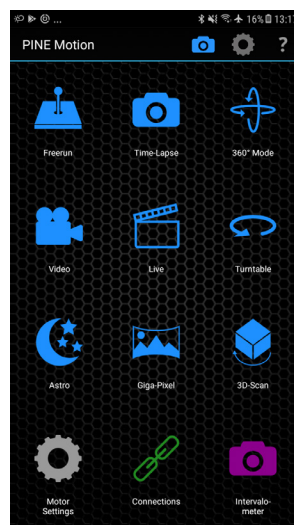
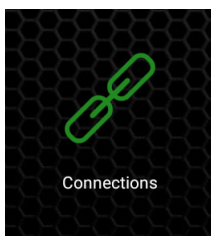
Firmware update:

Connect the PINE Controller to your computer via USB.

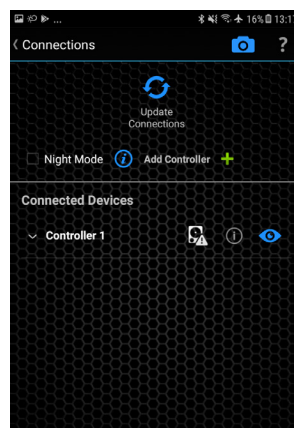
Plug in the power supply.

Connect your PINE Motion app with the controller by simply launching the app.

Press the button „Connections“.



Tap the following icon.

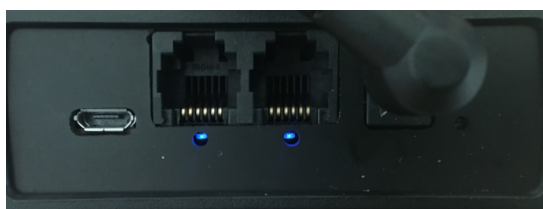
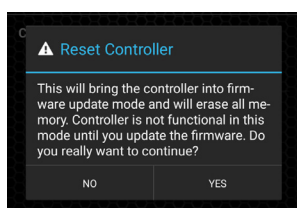


This puts your PINE controller into firmware upgrade mode.

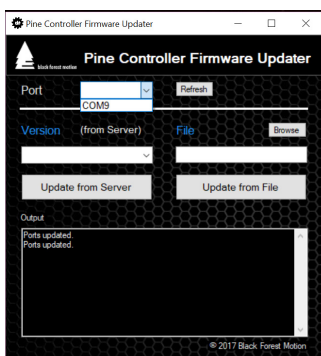
Please note: The controller is completely reset and can no longer be used until a new firmware has been installed.

Confirm with „YES“.

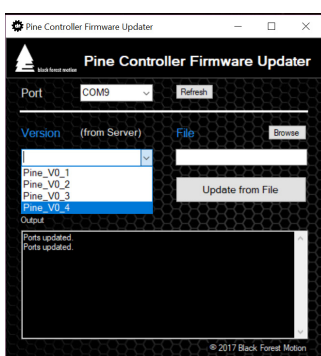
The controller indicates this by lightly illuminating both blue LEDs.



Your computer should now recognize the controller.
 Open the Pine Controller Firmware Updater.
 Under „Port“ select the corresponding port of your controller.
 If nothing appears here, click on the „Refresh“ button.



Once the correct port is selected, you can select the latest firmware version from the server.
 Click on „Update from Server“ to install the firmware.



As soon as the output confirms the process successfully, the firmware was installed.
 To use the controller with the new firmware, it must be restarted.
 To do this, simply disconnect the power supply.



The PINE Controller now has the latest version.
 The app should also be restarted.

Information about the installed firmware can be called up in the app under „Connections“. Just tap on the info symbol.

